

PIMA COUNTY TRANSPORTATION ADVISORY COMMITTEE
REGIONAL LOCAL ROAD REPAIR PROGRAM

JULY 24, 2018

PROGRAM UPDATE



www.pima.gov



PIMA COUNTY

PACKAGE 1		
CKS	1 & 3	\$1,303,076
SAM	1	\$1,272,270
Marana, Oro Valley		
TOTAL		\$2,575,346
BID: \$1,888,888 *		

PACKAGE 2		
MF	1, 2, 3	\$3,160,563
Tucson		
TOTAL		\$3,160,563
BID: \$3,387,700		

PACKAGE 3		
CS	1, 5	\$3,585,131
Pima County		
TOTAL		\$3,585,131
BID: \$3,333,322 *		

PACKAGE 4		
CS	2, 3, 4	\$3,437,989
Pima County, South Tucson		
TOTAL		\$3,437,989
BID: \$2,827,200 *		

PACKAGE 5		
MF	4, 5	\$4,080,282
Tucson		
TOTAL		\$4,080,282
BID: \$3,805,413		

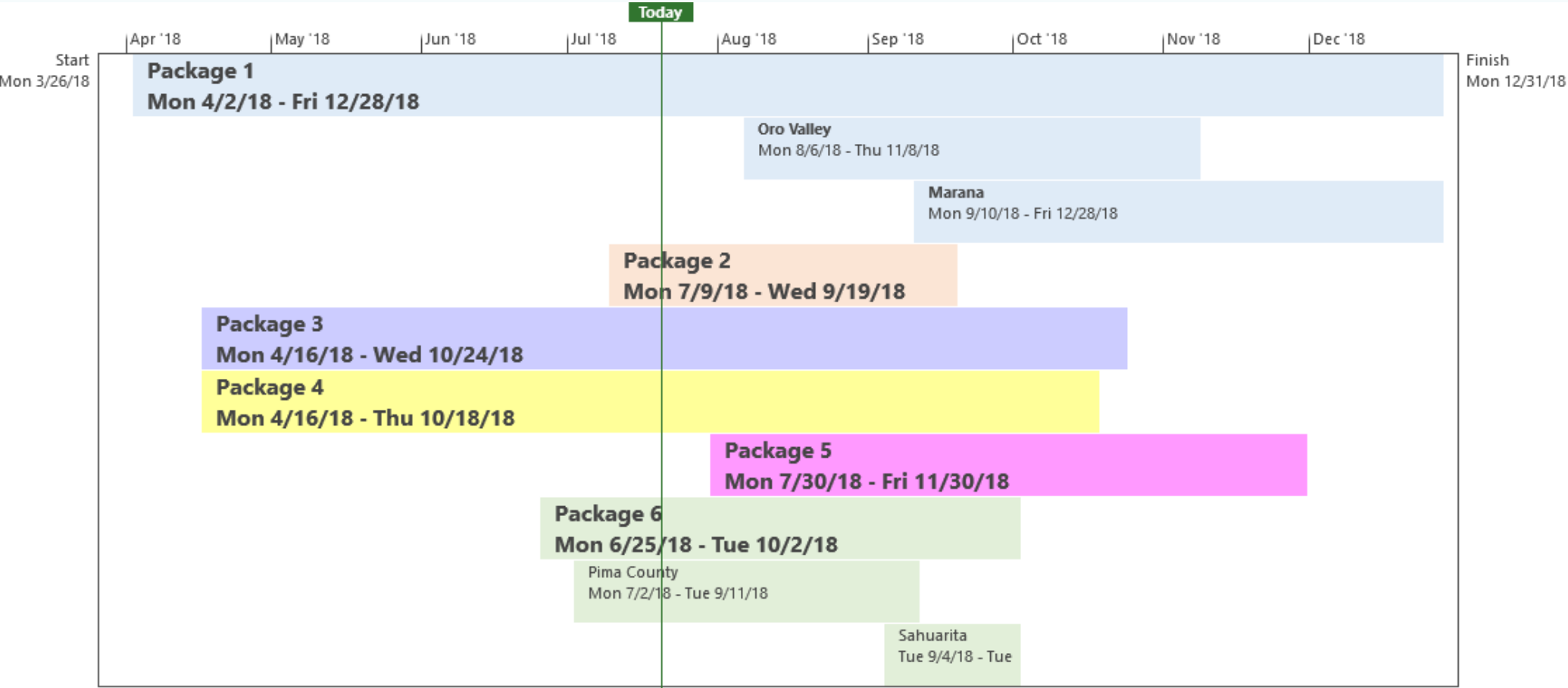
PACKAGE 6		
SCRUB	2, 3, 4	\$215,845
MICRO	2, 3, 4	\$298,971
MF/MICRO	4	\$996,367
Sahuarita, Pima County		
TOTAL		\$1,511,183
BID: \$1,433,956 *		

*Reserve 10% Contingency (if available) prior to “savings calculation”

YEAR 1 ALLOCATED VS PAID

Jurisdiction	Allocated Funding	Invoiced & Paid (as of 7/18/18)
Marana	\$1,183,834	\$0
Oro Valley	\$1,436,125	\$257,319
Sahuarita	\$520,649	\$0
South Tucson	\$51,470	\$0
Tucson	\$7,795,815	\$0
Unincorporated Area	\$7,938,632	\$384,595
Total	\$18,926,525	\$641,914

YEAR 1 CONSTRUCTION SCHEDULE



Questions?

Contact Information: robert.lane2@pima.gov



www.pima.gov



PIMA COUNTY