

PIMA COUNTY TRANSPORTATION ADVISORY COMMITTEE
HURF BOND ARTERIAL/COLLECTOR ROAD REPAIR

SEPTEMBER 25, 2018

PROGRAM UPDATE



www.pima.gov



PIMA COUNTY

HURF Bond Arterial/Collector FY19 List

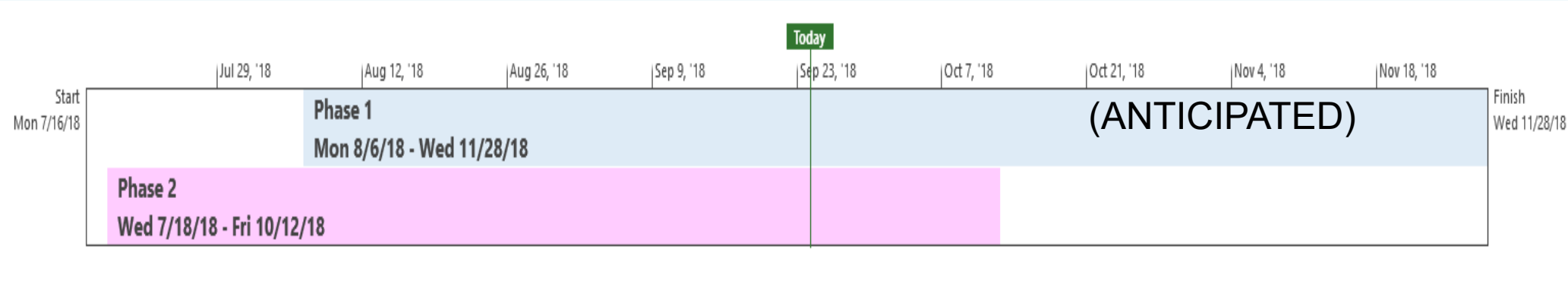
PHASE 1										
Paving Complete	Route	From	To	Average Daily Traffic	Length	Width	Area [yd ²]	BOS	Condition Rating	Treatment
100%	Colossal Cave	I-10	New Improvement	10,637	0.27	36	5,702	4	Failed	Mill / Fill New AC
100%	Escalante	Houghton	Old Spanish Trail	3,893	2.03	36	42,874	4	Failed	Mill / Fill New AC
100%	Fort Lowell	Houghton	Soldiers Trail	2,222	2.01	26	30,659	4	Failed	Mill / Fill New AC
100%	Soldier Trail	Fort Lowell	Mt. Lemmon Short Rd	3,260	2.34	26	35,693	4	Failed	Mill / Fill New AC
100%	Snyder	Oakwood	Soldiers Trail	2,589	1.21	36	25,555	4	Failed	Mill / Fill New AC
65% (Spring 2019)	Pontatoc	River	Sunrise	3,275	2.24	28	36,796	1	Failed	Mill / Fill New AC
100%	Snyder	Placita Del Sol	Avenida De La Colina	2,589	0.48	36	10,138	1	Failed	Mill / Fill New AC
90% (October 1)	Territory	Craycroft	Grey Mountain Tr	1,723	1.20	24	16,896	1	Failed	Mill / Fill New AC
85% (Spring 2019)	Hacienda Del Sol	River	Sunrise	5,501	2.32	28	38,110	1	Failed	Mill / Fill New AC
100%	Ina	Pima Canyon	Campbell	2,090	1.32	26	20,134	1	Failed	Mill / Fill New AC
5% (October 24)	Oracle Janes Station	Mona Lisa	San Joaquin	2,875	0.27	38	6,019	1	Failed	Mill / Fill New AC
95% (October 27)	Snyder	Bear Canyon	Placita del Sol	2,589	1.27	36	26822.4	1	Poor	Mill / Fill New AC
100%	Snyder	Avenida de la Colina	Oakwood	761	0.70	36	14784	4	Poor	Mill / Fill New AC
100%	Snyder	Palisade	Bear Canyon	1,400	0.27	26	4118.4	1	Failed	Mill / Fill New AC
Spring 2019	Magee	1st Avenue	EOR	1,644	0.80	26	12,203	1	Failed	Mill / Fill New AC

Total 18.73

HURF Bond Arterial/Collector FY19 List

PHASE 2										
Paving Complete	Route	From	To	Average Daily Traffic	Length	Width	Area [yd ²]	BOS	Condition Rating	Treatment
100%	Swan	Old Vail Connection	Los Reales	1,457	2.73	26	41,642	2	Failed	Mill / Fill New AC
100%	Avra Valley	Marana Town Limits	Marana Town Limits	4,867	0.76	38	16,943	3	Failed	Mill / Fill New AC
100%	Sweetwater	Six Bar Spur	Cmo de Oeste	3,363	0.70	26	10,677	3	Failed	Mill / Fill New AC
100%	Trico	Silverbell	Trico-Marana	3,213	0.43	40	10,091	3	Failed	Mill / Fill New AC
100%	San Joaquin	Neal	Milky Way	2,110	1.52	26	23,185	3	Failed	Mill / Fill New AC
100%	Manville	Anway	Trico	932	0.98	26	14,948	3	Failed	Mill / Fill New AC
100%	Mead	SR 85	Ajo Well	0	2.79	26	42,557	3	Failed	Mill / Fill New AC
100%	Cmo Encanto	Cmo del Sol	I-19 Frontage	3,776	0.56	48	15,770	4	Failed	Mill / Fill New AC
100%	Houghton	Cmo Aurelia	Cmo del Toro	3,326	1.09	26	16,626	4	Failed	Mill / Fill New AC
100%	La Canada	Mission Twin Buttes	Continental	2,881	0.70	48	19,712	4	Poor in 2015	Mill / Fill New AC
100%	Cardinal	Placita Arida	Pincushion	6,787	0.54	26	8,237	5	Failed	Mill / Fill New AC
100%	Irvington	1400' W of Caballo	Cactus Wren	6,120	1.87	36	39,494	5	Failed	Mill / Fill New AC
100%	Sorrel	Los Reales	Tetakusim	5,732	0.25	26	3,813	5	Failed	Mill / Fill New AC
100%	Sweetwater	Blue Bonnet	Six Bar Spur	3,363	0.43	26	6,559	5	Failed	Mill / Fill New AC
Total					15.35					

Arterial/Collector Construction Schedule



Questions?

Contact Information: robert.lane2@pima.gov



www.pima.gov



PIMA COUNTY