



---

# MEMORANDUM

---

Date: December 9, 2016

To: The Honorable Chair and Members  
Pima County Board of Supervisors

From: C.H. Huckelberry  
County Administrator 

Re: **Overview of the Pima County Aerospace, Defense, Technology Business and Research Park**

Attached is a map of current properties owned by Pima County and those that have been designated for employment uses for Raytheon, World View and Vector Space. The County is actively marketing to future employers the remaining properties, which range in size from 10 acres to 150 acres.

The World View headquarters and manufacturing facility will be complete in mid-December and operational by January 2017.

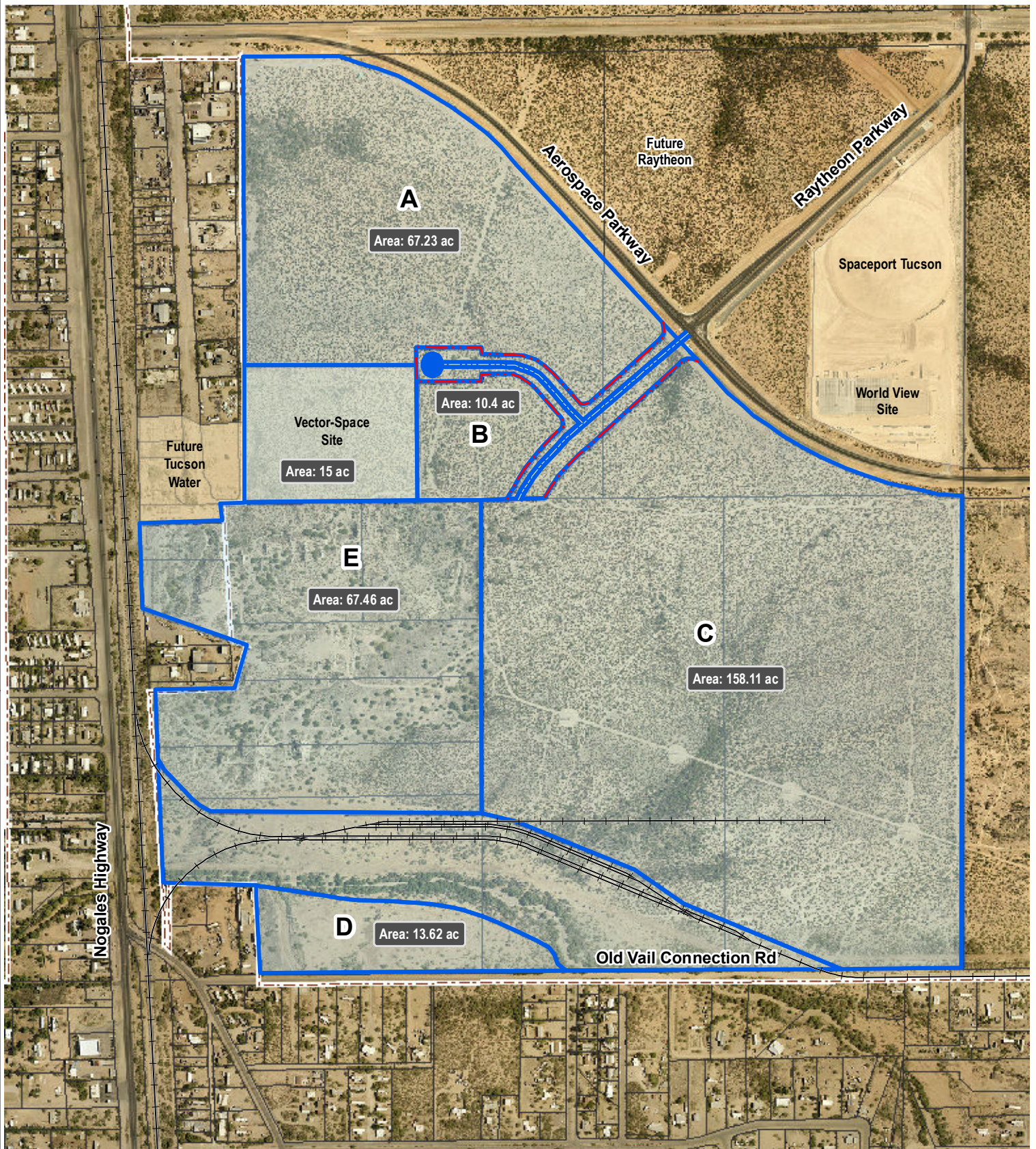
In addition, the ground lease for Vector Space will be on the Board's December 13, 2016 Addendum for Board consideration and approval.

The property identified as Future Raytheon is now included in the Aerospace Defense, Technology Business and Research Park as it is reserved for future Raytheon expansion.

CHH/anc

Attachment

c: Regina Nassen, Deputy County Attorney  
Dr. John Moffatt, Director, Economic Development Office  
Patrick Cavanaugh, Deputy Director, Economic Development Office



### Pima County Aerospace, Defense and Technology Business and Research Park



0 1,000 Feet