



MEMORANDUM

Date: August 7, 2018

To: The Honorable Chairman and Members
Pima County Board of Supervisors

From: C.H. Huckelberry
County Administrator

A handwritten signature in black ink, appearing to read "CHH", is written over the printed name "C.H. Huckelberry".

Re: **Architectural Planning Associated with the Pima County Historic Courthouse**

As you know, the Second and Third Floor renovations of the Pima County Historic Courthouse is underway and scheduled to be complete by the end of November 2018. The tenants (The UA Mineral Museum and Visitors Center) will locate to the facility during final construction of the First Floor. The Dillinger Courtroom or Courtroom 1, is being restored to its original 1929 condition.

All construction is anticipated to be complete by January 2020, this will include completion of the January 8th Memorial.

If you have any questions regarding progress of the construction of the Historic Courthouse, please contact me.

CHH/anc

Attachment

c: Jan Leshar, Chief Deputy County Administrator
Nicole Fyffe, Executive Assistant to the County Administrator
Diane Frisch, Director, Attractions and Tourism
Lisa Josker, Director, Facilities Management

Regional Topo Model and Tucson the Old Pueblo Case

Pima County Historic Courthouse

*Image by RAA

Heritage & Visitor Center

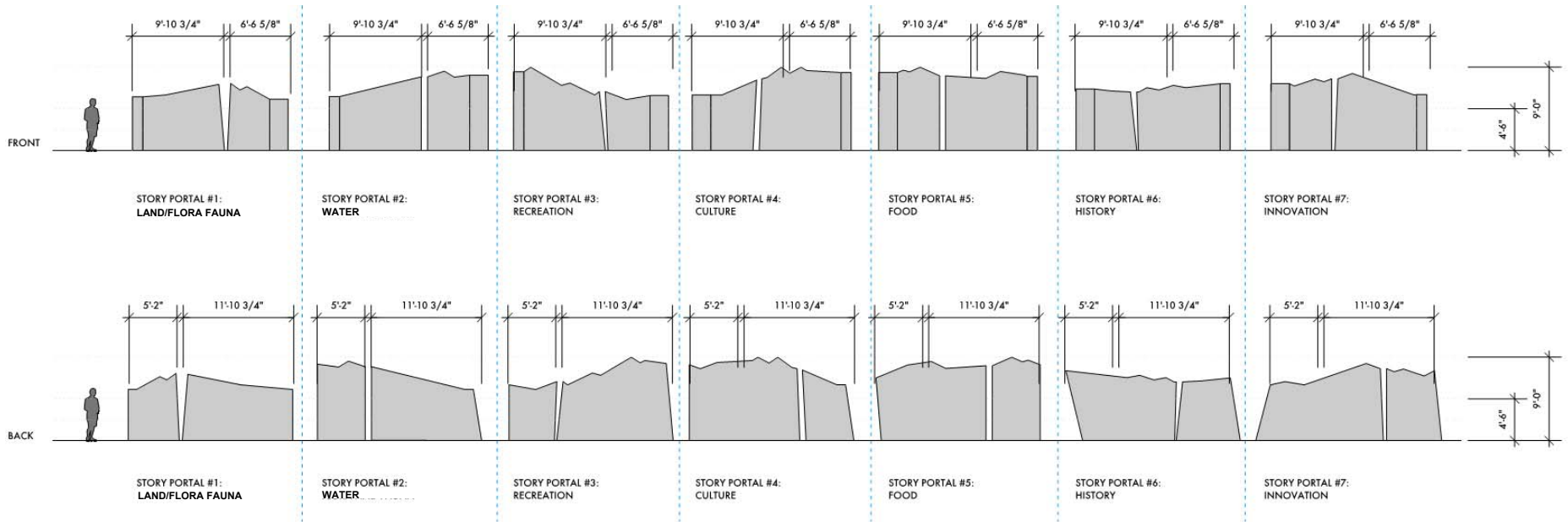


option 01

option 02



Options – Ceiling and Theater



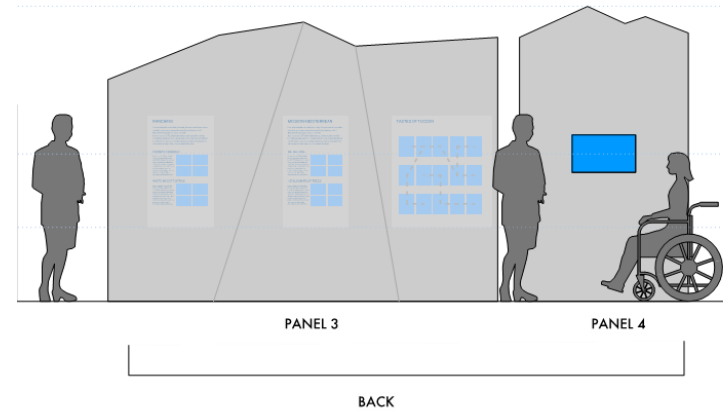
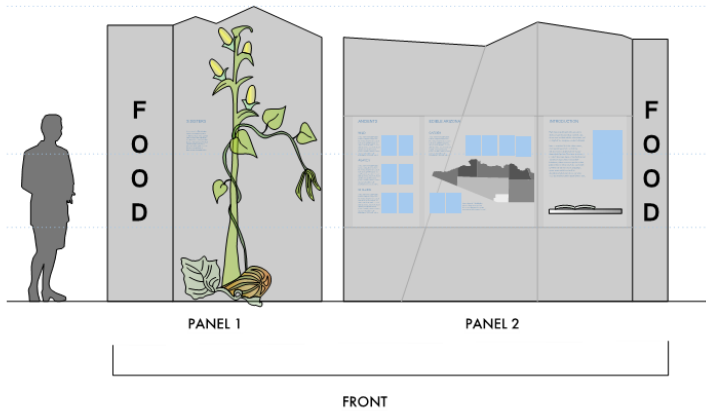
Story Portal Concept

Pima County Historic Courthouse

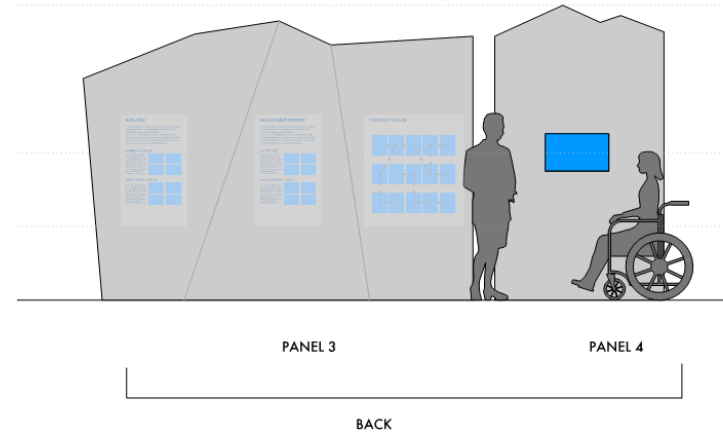
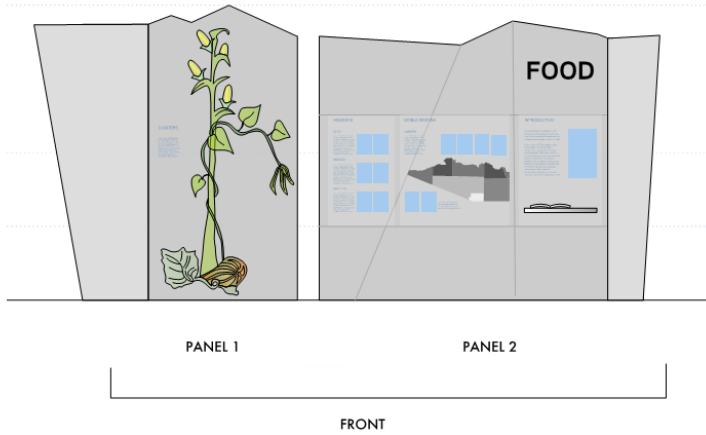
*Image by RAA

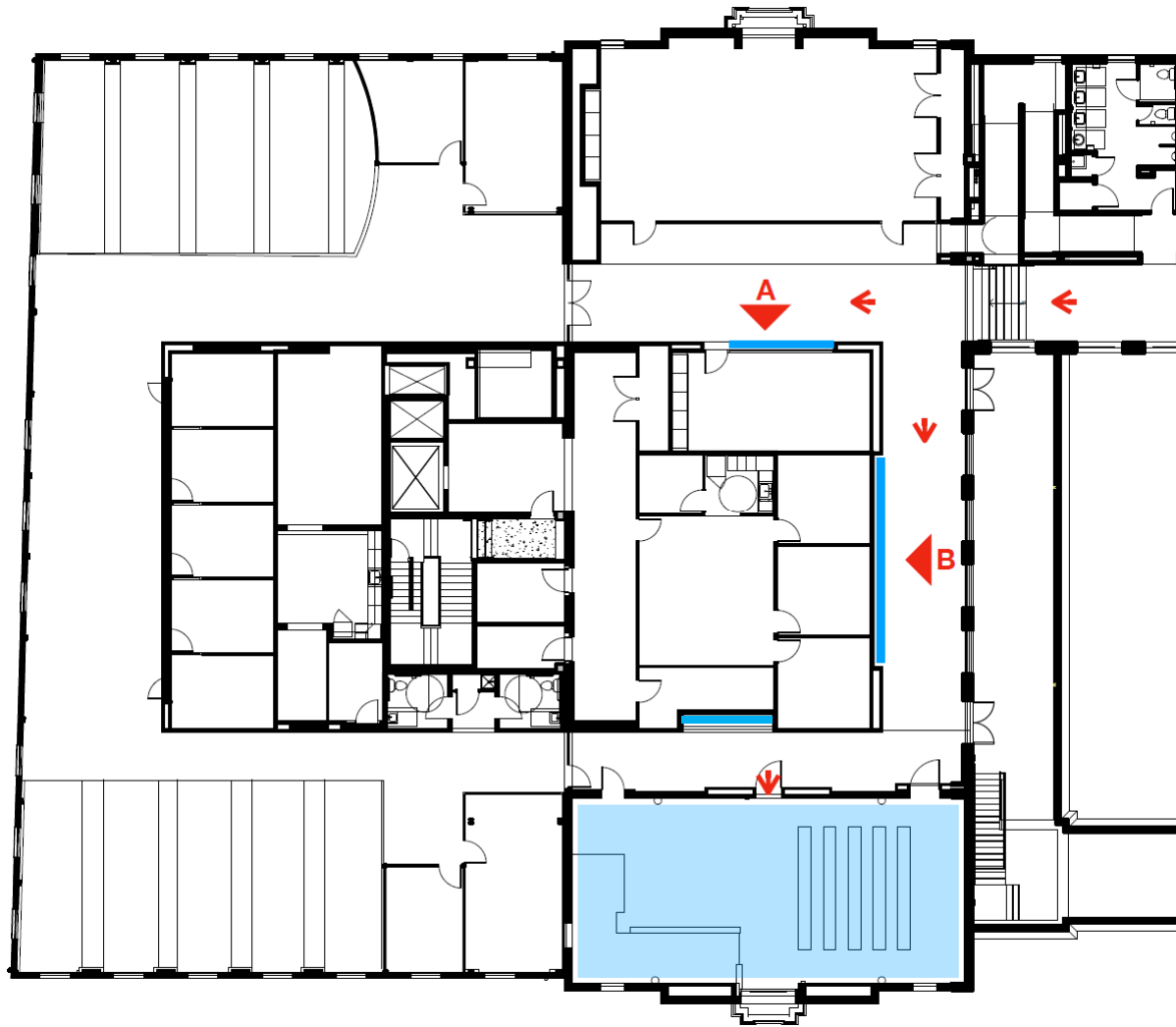
Heritage & Visitor Center

**STORY PORTAL #5:
FOOD OPT 1**



**STORY PORTAL #5:
FOOD OPT 2**





Second Floor

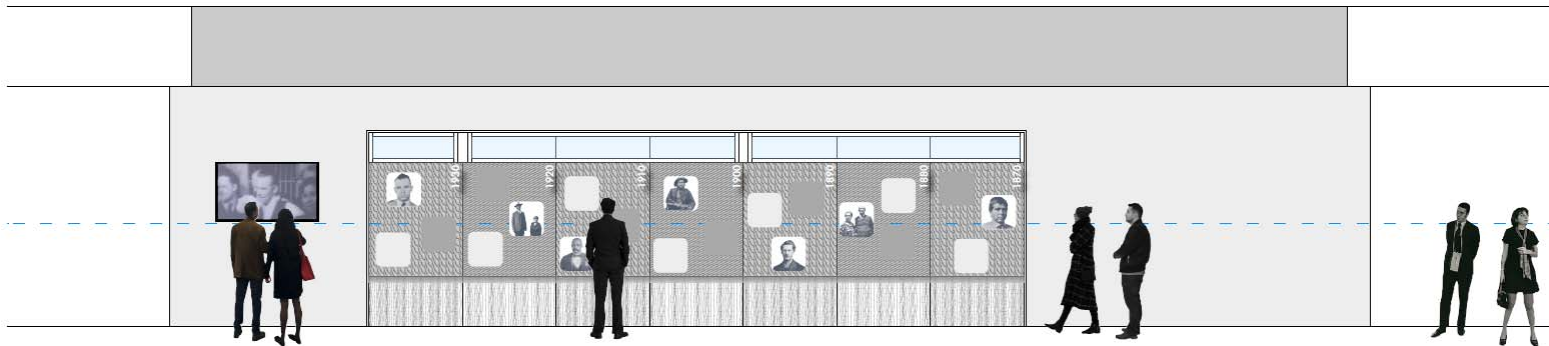
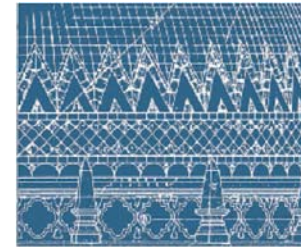
Pima County Historic Courthouse

*Image by RAA

Heritage & Visitor Center



Elevation A



Elevation B

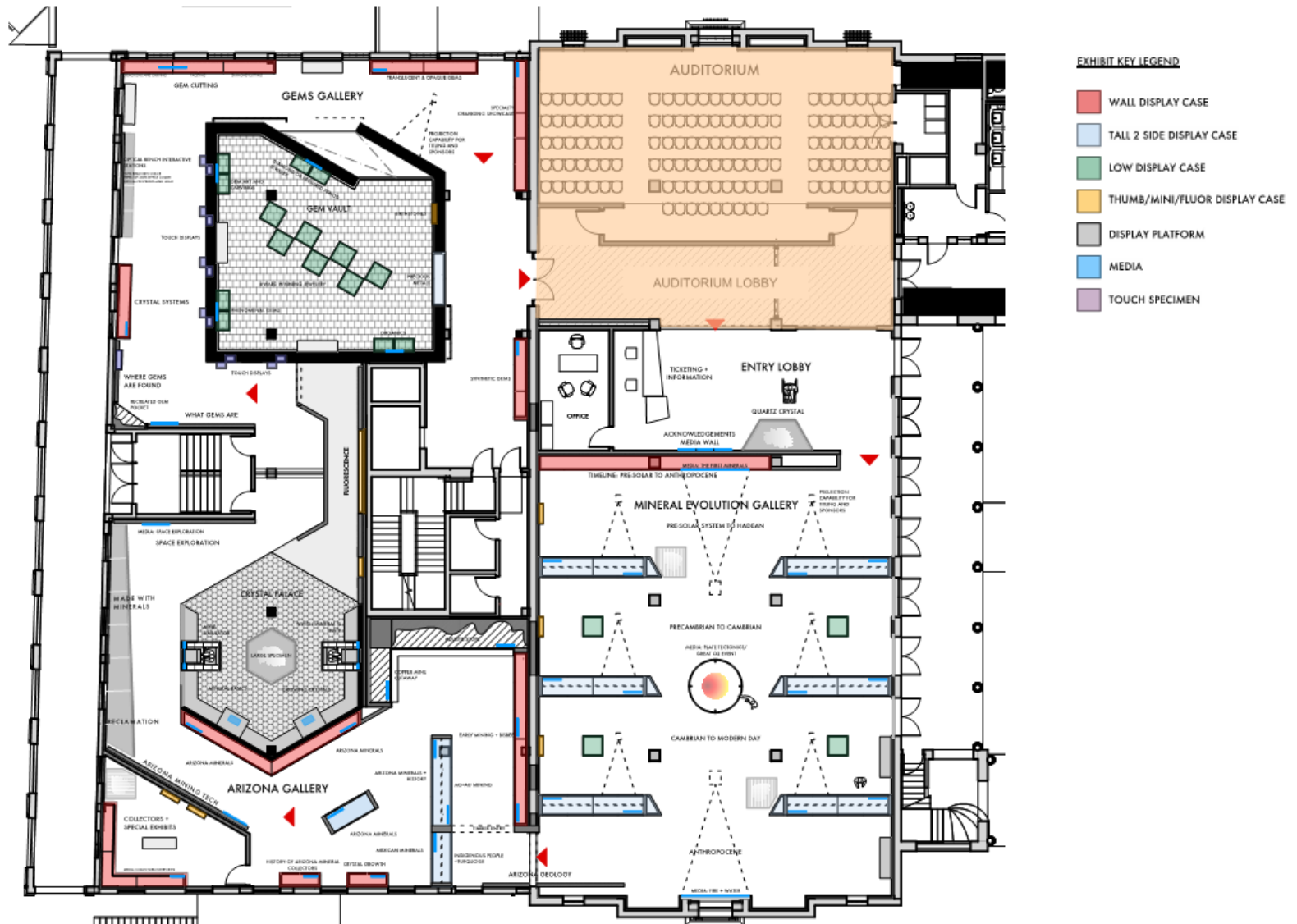


Second Floor Exhibits

Pima County Historic Courthouse

*Images by RAA

Heritage & Visitor Center

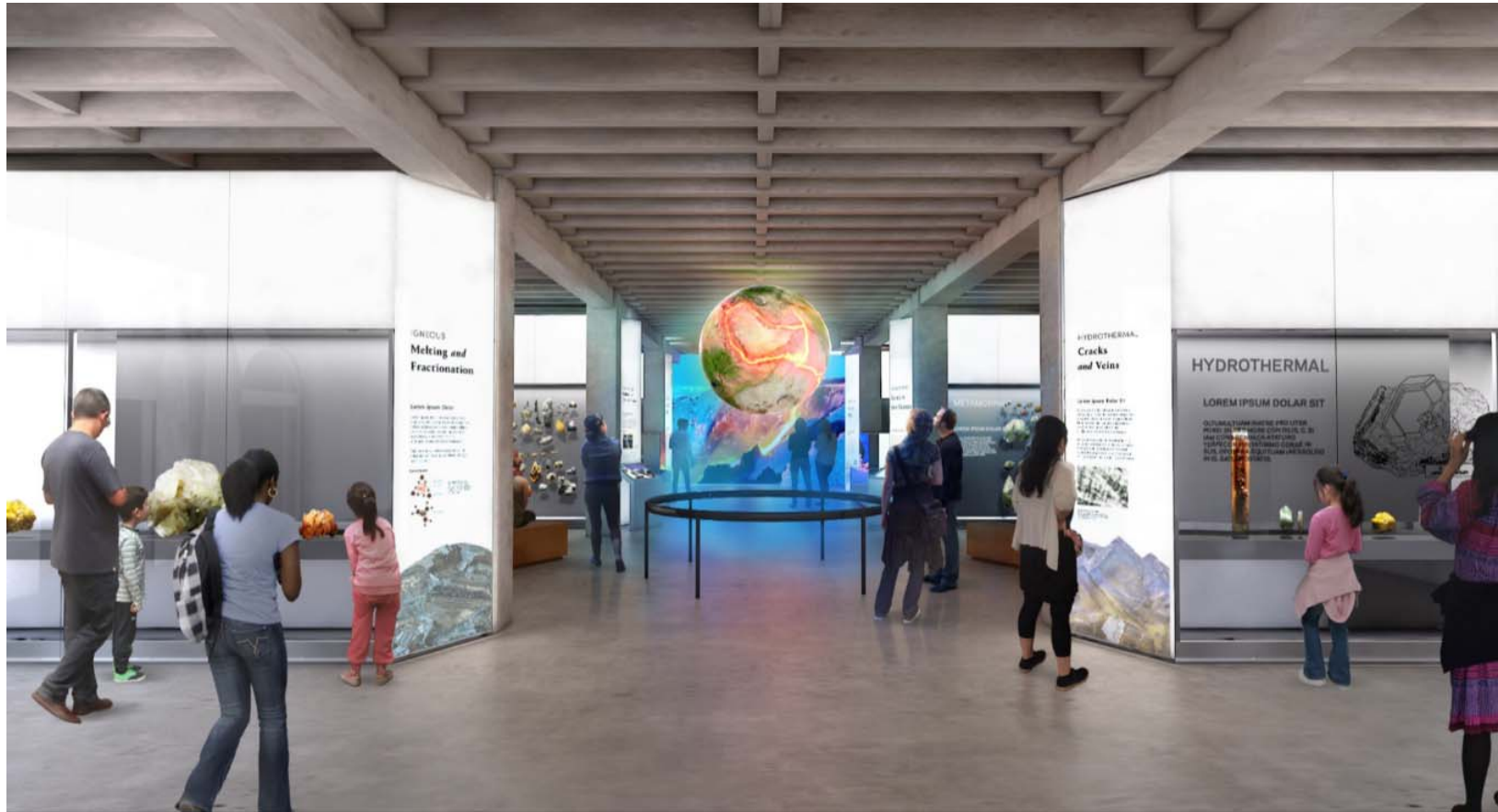


First Floor

Pima County Historic Courthouse

*Image by RAA

UA Gem and Mineral Museum



Mineral Evolution Gallery

Pima County Historic Courthouse

*Image by RAA

UA Gem and Mineral Museum